

Caratteristiche dei materiali

Setti in ca.

Quantità complessive:
Acciaio = 1796,2 daN
Calcestruzzo = 14,19 mc

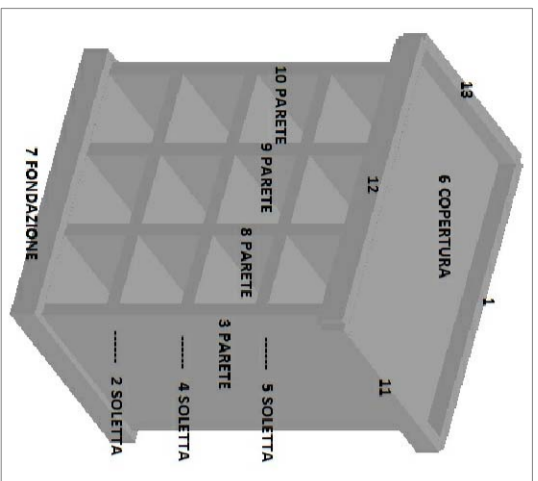
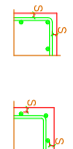
Caratteristiche dei materiali

CLS classe C25/30
Acciaio B 450 C

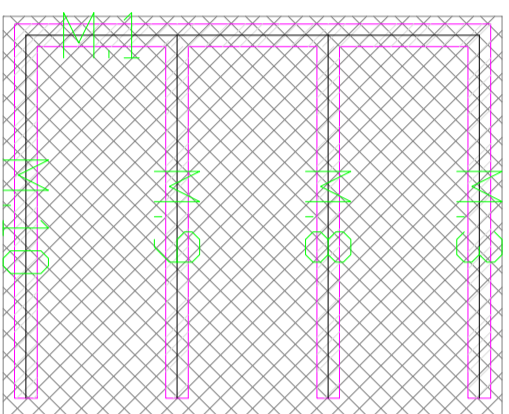
PRESCRIZIONI

COPERTURE NETTO

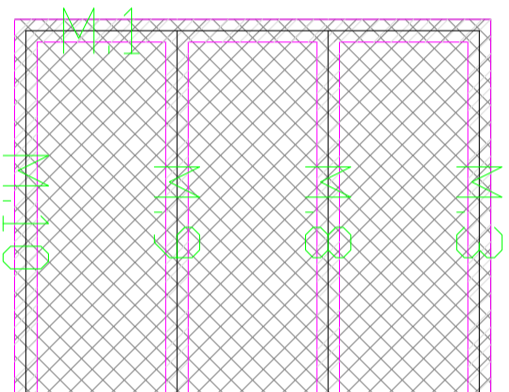
- SOLIUM DI FONDAZIONE: FONDAZIONI ARMATE E NON ARMATE 4x25 mm
- OPERE IN ELIMINAZIONE CON SPAZIO MINIMALE 0 NON SUPERAMENTI 4x25 mm



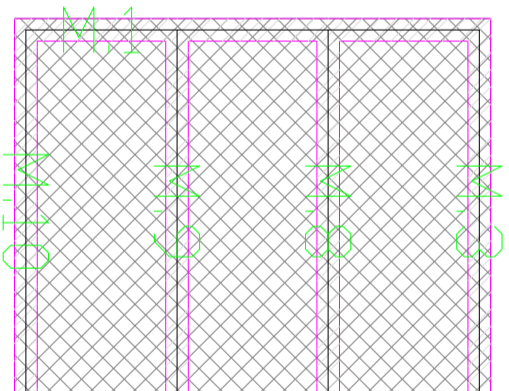
Scala 1:25



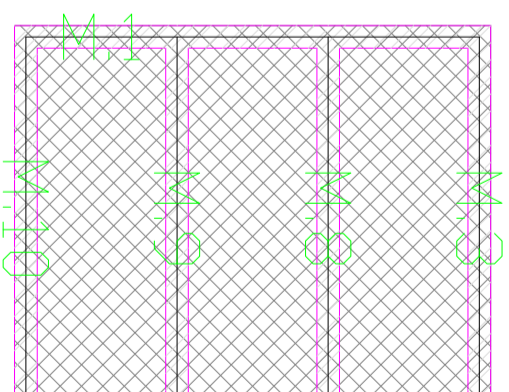
Impalcato a quota -15



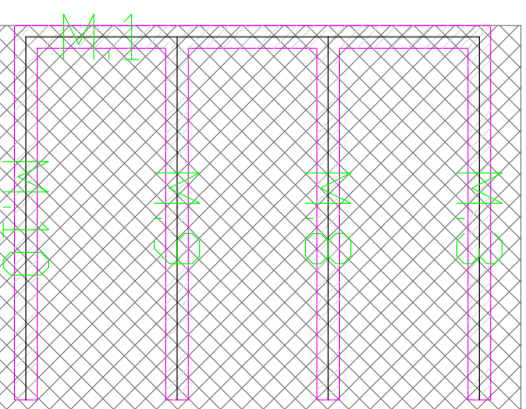
Impalcato a quota +82.75



Impalcato a quota +172.50

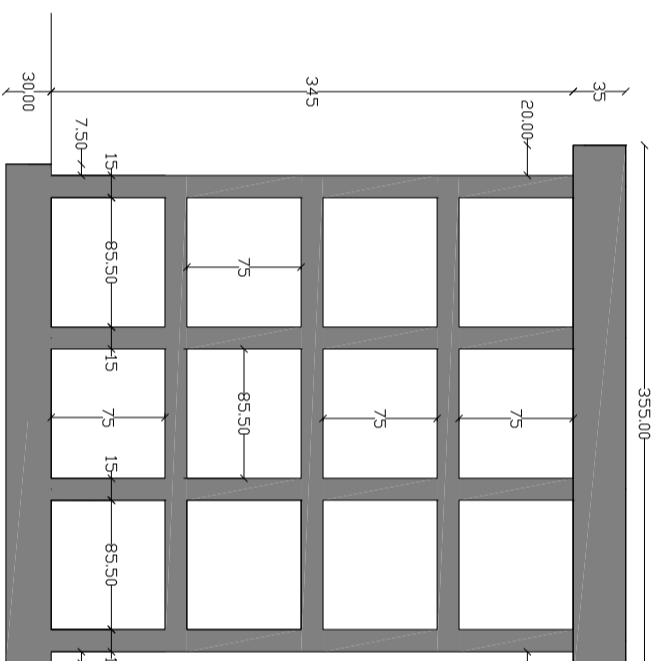


Impalcato a quota +262.50

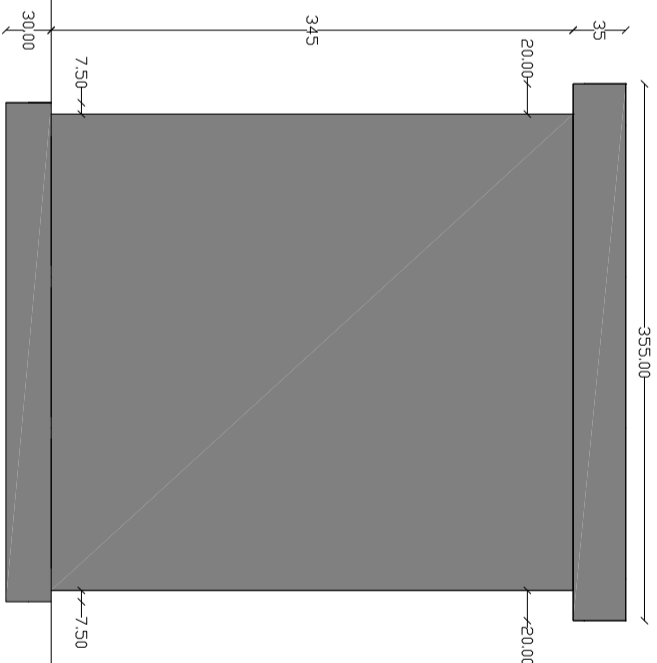


Impalcato a quota +353

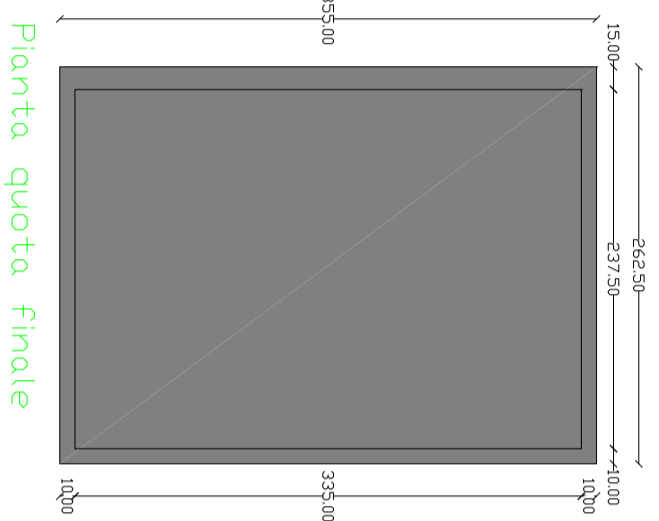
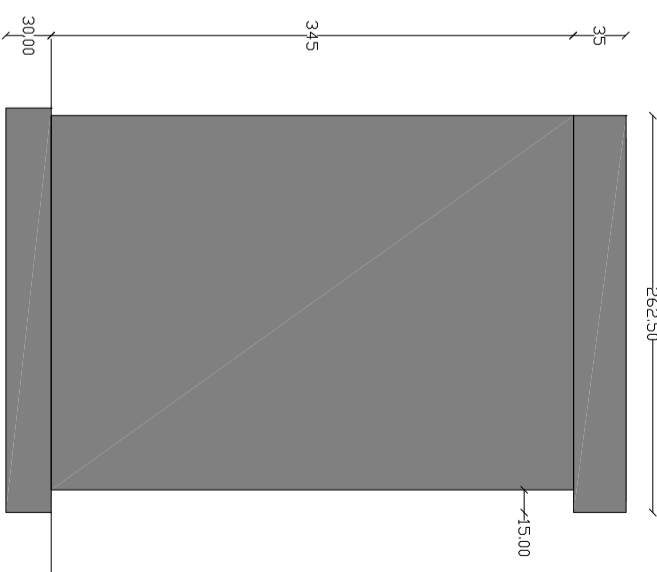
Prospetto frontale



Prospetto Posteriore

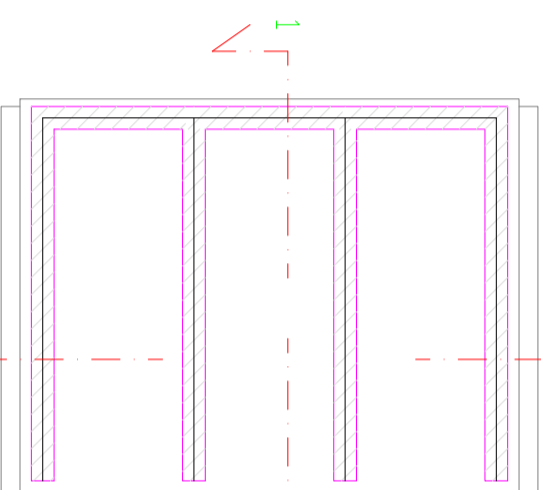


Prospetto Laterale

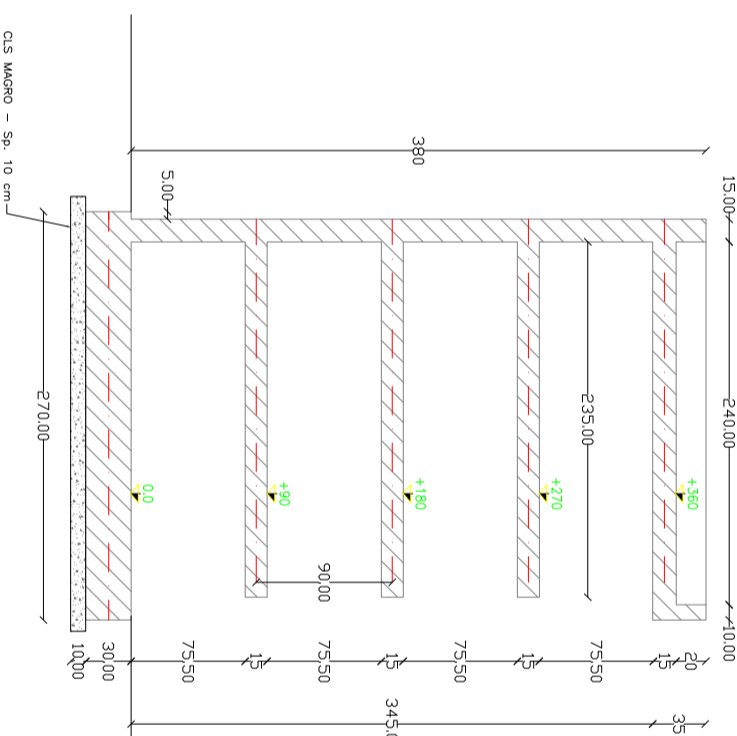


Pianta quota finale

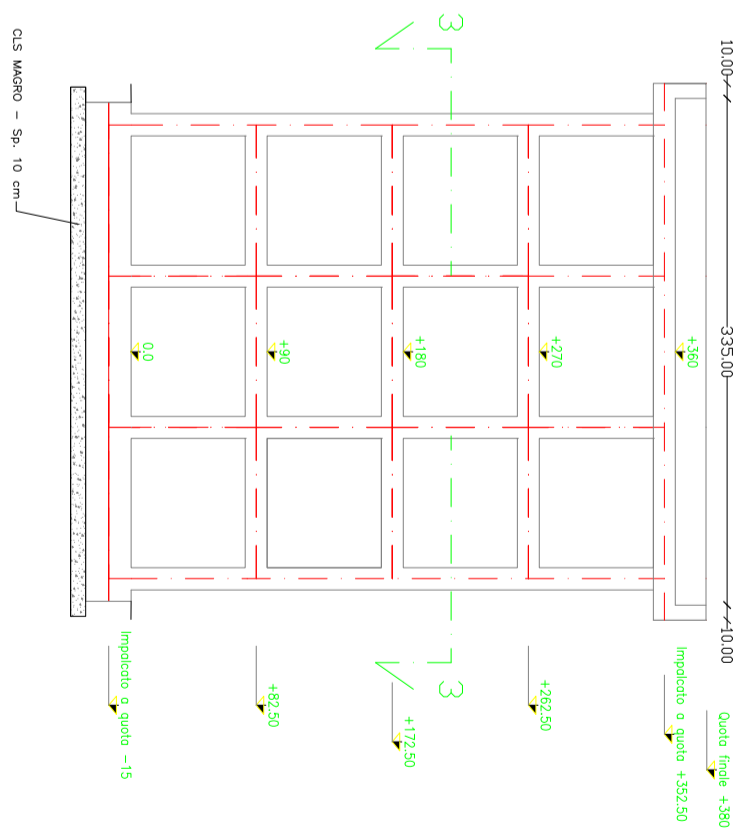
Scala 1:25



Sezione 1-1



Sezione 2-2



Sezione 3-3

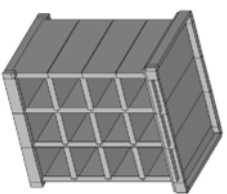


Comune di Santa Sofia d'Epiro
Provincia di Cosenza

PROGETTO ESECUTIVO

AMPLIAMENTO DEL CIMITERO COMUNALE CON LA REALIZZAZIONE DI N. 60 LOCULI

TAVOLA N.	DESCRIZIONE	SCALA
13-b	PIANTA, PROSPETTI E SEZIONI BATTERIA 12 LOCULI IN C.A.	--



Giugno 2017

I Tecnici

Ing. Vincenzo Scarpello

Ing. Enzo Dima Ruggiano

R.U.P.

Geom. Giuseppe Iuzzi