

### Materiali

SMI in c.a.  
Quantità complessive  
Acciaio = 628264 DAN  
Calcestruzzo = 5300 mc

### Caratteristiche dei materiali

D.S. classe S28/30  
Acciaio S 439 C

### PRESCRIZIONI

#### COPRIFRANTO NETTO

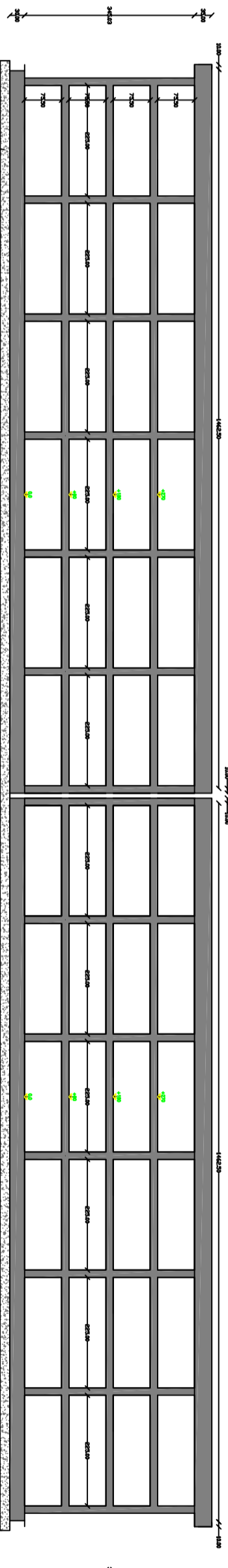
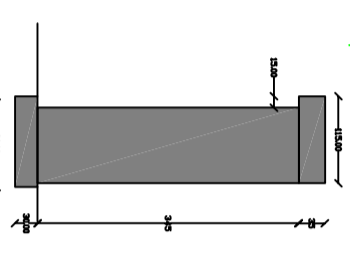
- SOLITINE DI FISSAGGIO, PRODUZIONI ALMATE E NON ALMATE
- OPERE IN ELIMINARE CON SPERSO INTERNO O NON SPERSONALI



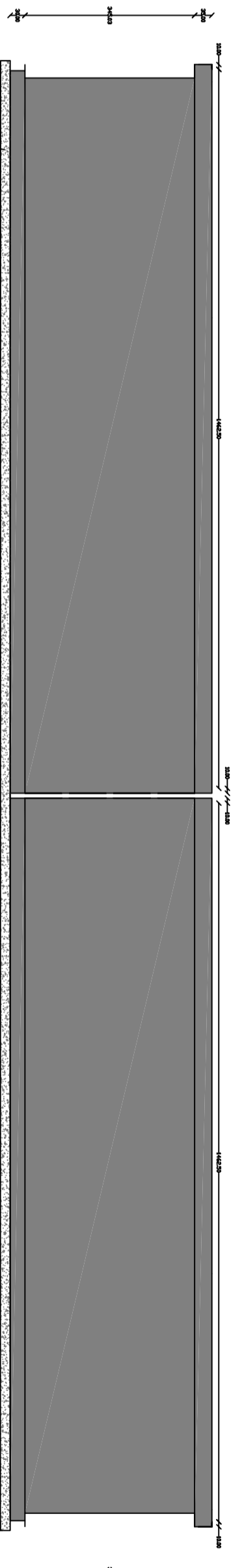
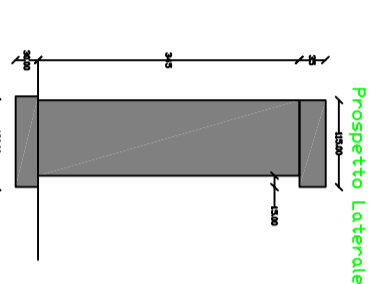
Prospetto frontale batteria 1 - 48  
giunto tecnico al f.c.m. interposto a metà batteria.



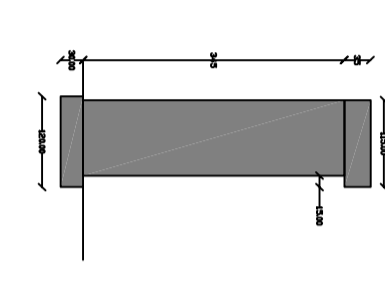
### Prospetto frontale



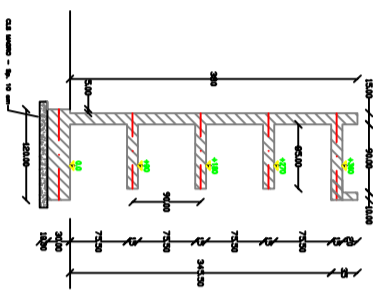
### Prospetto Posteriore



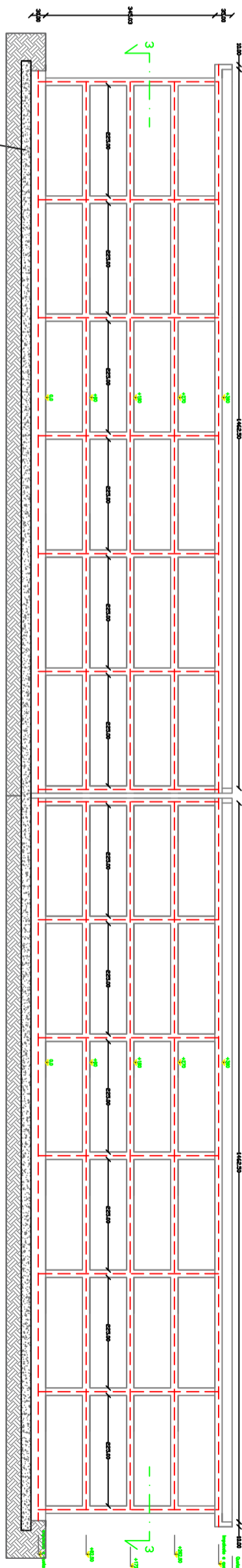
### Prospetto Laterale



### Sezione 1-1



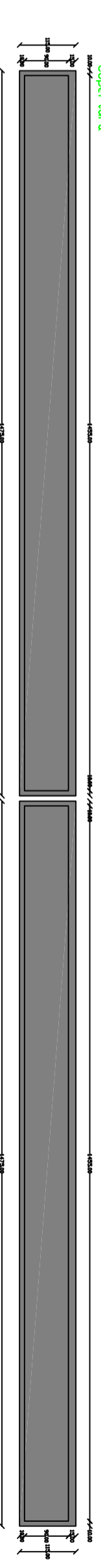
### Sezione 2-2



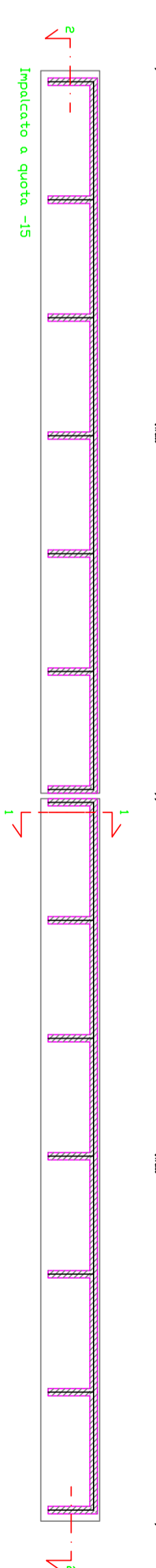
### C.S. MURDO - Sp. 10 cm

Scala 1/50

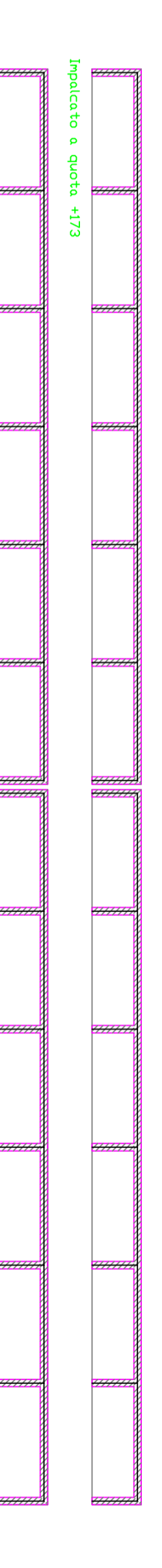
### Copertura



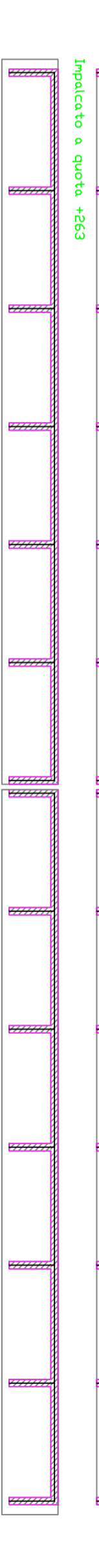
### Impalcato a quota -15



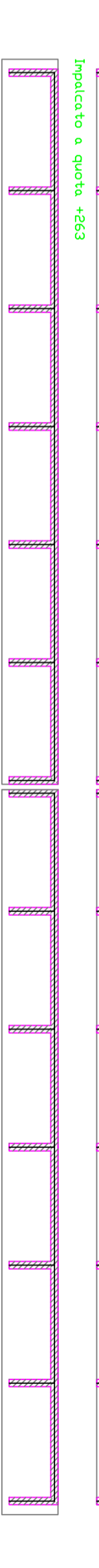
### Impalcato a quota +83



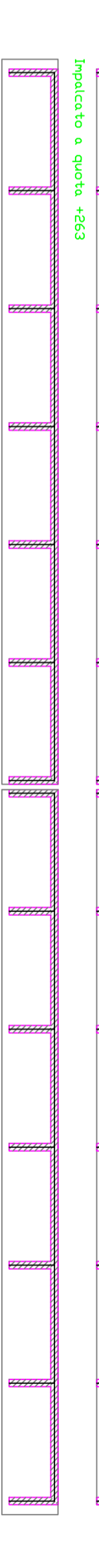
### Impalcato a quota +173



### Impalcato a quota +263



### Impalcato a quota +353

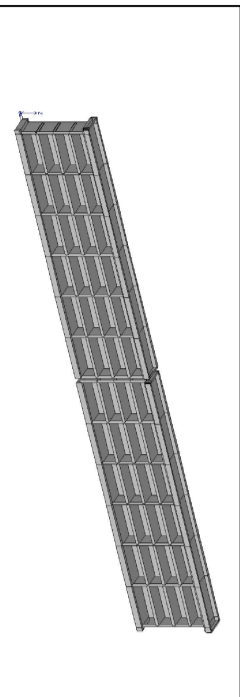


**Comune di Santa Sofia d'Epiro**  
Provincia di Cosenza

### PROGETTO ESECUTIVO

\*AMPLIAMENTO DEL CIMITERO COMUNALE CON LA REALIZZAZIONE DI N. 60 LOCULI\*

TAVOLA N.	DESCRIZIONE	SCALA
13-a	PIANTA SEZIONI E PROSPETTI BATTERIA 48 LOCULI IN C.A. COPRO "A"	1:50



Giugno 2017

I Tecnici

Ing. Vincenzo Scampello

Ing. Enzo Dima Ruggiano

R.U.P.  
Geom. Giuseppe Iuzzi